

REVISIONS			
REV.	DESCRIPTION	DATE	APPROVED
A	INITIAL RELEASE	28-07-2021	GUTTADAURO

1. CONSTRUCTION:

CONDUCTOR: 24 AWG SOLID BARE COPPER, DIA. ($\pm 0.005\text{mm}$) 0.50

INSULATION: FLUORINATED ETHYLENE PROPYLENE
 AVERAGE THICKNESS (mm) 0.185
 MIN. POINT THICKNESS (mm) 0.170
 INSULATION DIA. ($\pm 0.01\text{mm}$) 0.87
 TWISTED PAIR DIA. ($\pm 0.02\text{mm}$) 1.74

PAIRS: COLOR CODED SINGLES TWISTED INTO PAIRS

CABLE: (4) TWISTED PAIRS TWISTED TOGETHER TO FORM A CABLE CORE
 (4PAIRS CAT5E UTP CABLE SPECS)

JACKET: CMP RATED PVC
 AVERAGE THICKNESS (mm) 0.50
 MIN. POINT THICKNESS (mm) 0.45
 OUTER DIA. ($\pm 0.1\text{mm}$) 4.80
 OVERALL CABLE DIAMETER RIP CORD (NYLON)

2. PHYSICAL PROPERTIES:

TEMPERATURE RATING MAX. 75°C
 TEMPERATURE RATING MIN. -20°C

3. AGENCY APPROVALS:

ETL LISTED

4. APPLICATION:

MEETS TIA568 C.2 CHANNEL REQUIREMENTS AT 53 METERS. 6.5 METERS OF PATCH CABLE WITH A 90 METERS PERMANENT LINK (96.5 METER CHANNEL) OR 10 METERS OF PATCH CABLE WITH A 84 METER PERMANENT LINK (94 METER CHANNEL)

5. ELECTRICAL CHARACTERISTICS: (FOR 100m OF CABLE)

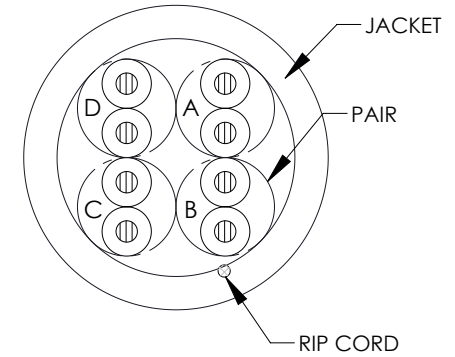
PAIR-TO-GROUND CAPACITANCE UNBALANCE ≤ 330 pF/100m
 MAX. CONDUCTOR DC RESISTANCE 20°C 93.8 Ω /km
 IMPEDANCE 100 \pm 15 Ω 1-250 MHz
 RETURN LOSS
 1 \leq f \leq 10 MHz 20 + 5 LOG (F) dB MIN
 10 \leq f \leq 20 MHz 25 dB MIN
 20 \leq f \leq 100 MHz 22 - 2 LOG (F/20) dB MIN

6. PACKAGING:

CABLE SHIPPED ON A PULL BOX (305m / 1000ft)

MODEL NUMBER	DESCRIPTION	COLOR
00406459	CAT5e CABLE ETHERNET UTP PLENUM JACKET	GREEN
00406460	CAT5e CABLE ETHERNET UTP PLENUM JACKET	GREY
00406461	CAT5e CABLE ETHERNET UTP PLENUM JACKET	RED
00406462	CAT5e CABLE ETHERNET UTP PLENUM JACKET	YELLOW

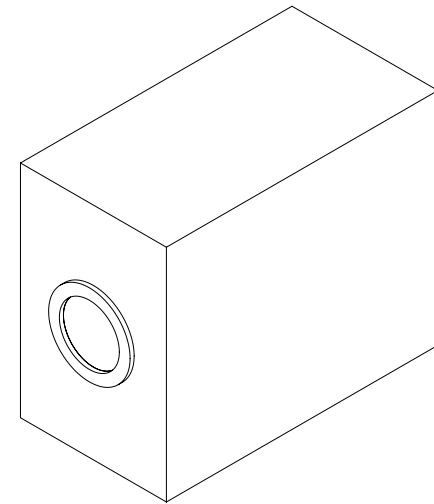
CROSS-SECTIONAL VIEW



COLOR CODE:

- A. BLUE, WHITE/BLUE
- B. ORANGE, WHITE/ORANGE
- C. GREEN, WHITE/GREEN
- D. BROWN, WHITE/BROWN

1000 FEET OF CONTINUOUS LENGTH BULK CABLE



THESE COMMODITIES, TECHNOLOGY OR SOFTWARE WERE EXPORTED FROM THE UNITED STATES IN ACCORDANCE WITH THE EXPORT ADMINISTRATION REGULATIONS. DIVERSION CONTRARY TO U.S. LAW PROHIBITED.

UNLESS OTHERWISE SPECIFIED LEADING DIMENSIONS ARE INCHES DIMENSIONS IN [] ARE MILLIMETERS

TOLERANCES:

X = ± 2 [5.08]	FRACTIONS
.XX = ± 0.02 [.51]	± 1/32
.XXX = ± 0.005 [.13]	ANGLES ± 1°

CABLE LENGTH (L) TOLERANCES:

L ≤ 12 [305]	= +1 [25] / -0
12 [305] < L ≤ 60 [1524]	= +2 [51] / -0
60 [1524] < L ≤ 120 [3048]	= +4 [102] / -0
120 [3048] < L ≤ 300 [7620]	= +6 [152] / -0
300 [7620] < L	= +5%L / -0

ALL DIMENSIONS SHOWN ARE FOR REFERENCE ONLY.

NavePoint
 an INFINIT[®] brand

859 E. Park Avenue, Libertyville, IL 60048
 Phone: 1.800.505.1363
 Website: www.navepoint.com
 E-mail: sales@navepoint.com

SIZE	CAGE CODE	DRAWN BY	ITEM NO.	REV
A	7UTA6	MVEERAPPAN	00406459	A

THIRD-ANGLE PROJECTION

THE INFORMATION AND DESIGN IN THIS DOCUMENT IS THE PROPERTY OF TRANSECTOR, INC. ALL RIGHTS RESERVED.

SHEET	1	OF	1
SCALE	N/A		