

REVISIONS			
REV.	DESCRIPTION	DATE	APPROVED
A	INITIAL RELEASE	28-07-2021	GUTTADAURO

1. CONSTRUCTION:

CONDUCTOR: 23 AWG SOLID BARE COPPER, DIA. ( $\pm 0.05\text{mm}$ ) 0.575

INSULATION: HIGH DENSITY POLYETHYLENE  
 AVERAGE THICKNESS (mm) 0.220  
 MIN. POINT THICKNESS (mm) 0.200  
 INSULATION DIA. ( $\pm 0.01\text{mm}$ ) 0.98  
 TWISTED PAIR DIA. ( $\pm 0.02\text{mm}$ ) 2.02

PAIRS: COLOR CODED SINGLES TWISTED INTO PAIRS

CABLE: (4) TWISTED PAIRS TWISTED TOGETHER TO FORM A CABLE CORE  
 (4PAIRS CAT5E UTP CABLE SPECS)  
 FILLER- FR-PE SPLINE

JACKET: PVC  
 AVERAGE THICKNESS (mm) 0.60  
 MIN. POINT THICKNESS (mm) 0.55  
 OUTER DIA. ( $\pm 0.1\text{mm}$ ) 6.20  
 OVERALL CABLE DIAMETER RIP CORD (NYLON)

2. PHYSICAL PROPERTIES:  
 TEMPERATURE RATING MAX. 75°C  
 TEMPERATURE RATING MIN. -20°C

3. AGENCY APPROVALS:  
 ETL LISTED

4. APPLICATION:  
 MEETS TIA568 C.2 CHANNEL REQUIREMENTS AT 53 METERS. 6.5 METERS OF PATCH CABLE WITH A 90 METERS PERMANENT LINK (96.5 METER CHANNEL) OR 10 METERS OF PATCH CABLE WITH A 84 METER PERMANENT LINK (94 METER CHANNEL)

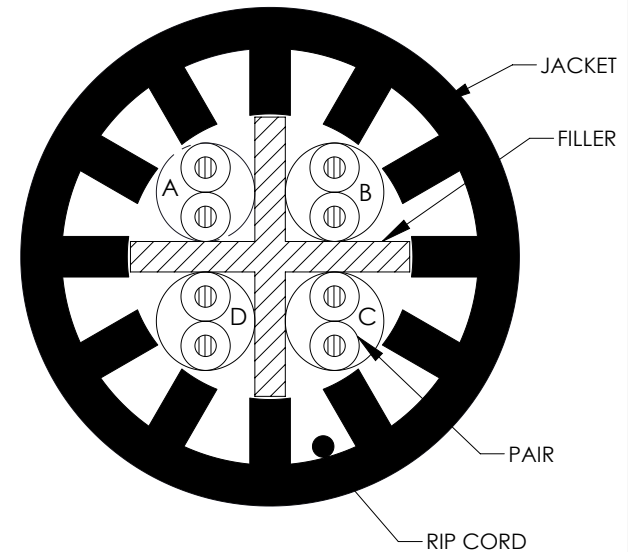
5. ELECTRICAL CHARACTERISTICS: (FOR 100m OF CABLE)  
 PAIR-TO-GROUND CAPACITANCE UNBALANCE  $\leq 330$  pF/100m  
 MAX. CONDUCTOR DC RESISTANCE 20°C 93.8 $\Omega$ /km  
 IMPEDANCE 100 $\pm 15\Omega$  1-250 MHz  
 RETURN LOSS  
 1  $\leq f \leq 10$  MHz 20 + 5 LOG (F) dB MIN  
 10  $\leq f \leq 20$  MHz 25 dB MIN  
 20  $\leq f \leq 100$  MHz 22 - 2 LOG (F/20) dB MIN

6. PACKAGING:  
 CABLE SHIPPED ON A PULL BOX (305m / 1000ft)

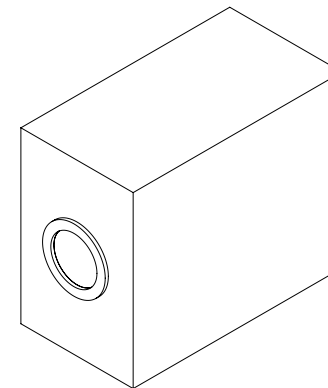
COLOR CODE:

- A. BLUE, WHITE/BLUE
- B. ORANGE, WHITE/ORANGE
- C. GREEN, WHITE/GREEN
- D. BROWN, WHITE/BROWN

CROSS-SECTIONAL VIEW



1000 FEET OF CONTINUOUS LENGTH BULK CABLE



MODEL NUMBER	DESCRIPTION	COLOR
00406477	CAT6A CABLE ETHERNET UTP RISER JACKET	BLACK
00406478	CAT6A CABLE ETHERNET UTP RISER JACKET	BLUE
00406479	CAT6A CABLE ETHERNET UTP RISER JACKET	GREEN
00406480	CAT6A CABLE ETHERNET UTP RISER JACKET	GREY
00406481	CAT6A CABLE ETHERNET UTP RISER JACKET	RED
00406482	CAT6A CABLE ETHERNET UTP RISER JACKET	WHITE
00406483	CAT6A CABLE ETHERNET UTP RISER JACKET	YELLOW

THESE COMMODITIES, TECHNOLOGY OR SOFTWARE WERE EXPORTED FROM THE UNITED STATES IN ACCORDANCE WITH THE EXPORT ADMINISTRATION REGULATIONS. DIVERSION CONTRARY TO U.S. LAW PROHIBITED.

UNLESS OTHERWISE SPECIFIED LEADING DIMENSIONS ARE INCHES DIMENSIONS IN [ ] ARE MILLIMETERS

TOLERANCES:  
 .X =  $\pm 0.2$  [5.08] FRACTIONS  
 .XX =  $\pm 0.02$  [.51]  $\pm 1/32$   
 .XXX =  $\pm 0.005$  [.13] ANGLES  $\pm 1^\circ$

CABLE LENGTH (L) TOLERANCES:  
 L  $\leq 12$  [305] =  $\pm 1$  [25] / -0  
 12 [305] < L  $\leq 60$  [1524] =  $\pm 2$  [51] / -0  
 60 [1524] < L  $\leq 120$  [3048] =  $\pm 4$  [102] / -0  
 120 [3048] < L  $\leq 300$  [7620] =  $\pm 6$  [152] / -0  
 300 [7620] < L =  $\pm 5\%$ L / -0

ALL DIMENSIONS SHOWN ARE FOR REFERENCE ONLY.

**NavePoint**  
 an INFINIT<sup>®</sup> brand

859 E. Park Avenue, Libertyville, IL 60048  
 Phone: 1.800.505.1363  
 Website: www.navepoint.com  
 E-mail: sales@navepoint.com

THIRD-ANGLE PROJECTION

THE INFORMATION AND DESIGN IN THIS DOCUMENT IS THE PROPERTY OF TRANSECTOR, INC. ALL RIGHTS RESERVED.

SHEET 1 OF 1

SCALE N/A

SIZE	CAGE CODE	DRAWN BY	ITEM NO.	REV
A	7UTA6	MVEERAPPAN	00406477	A