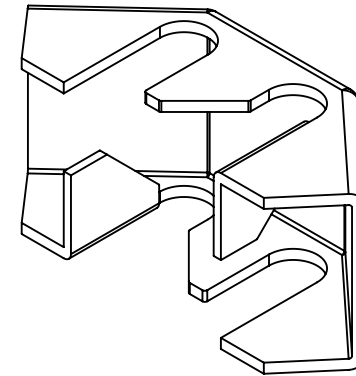
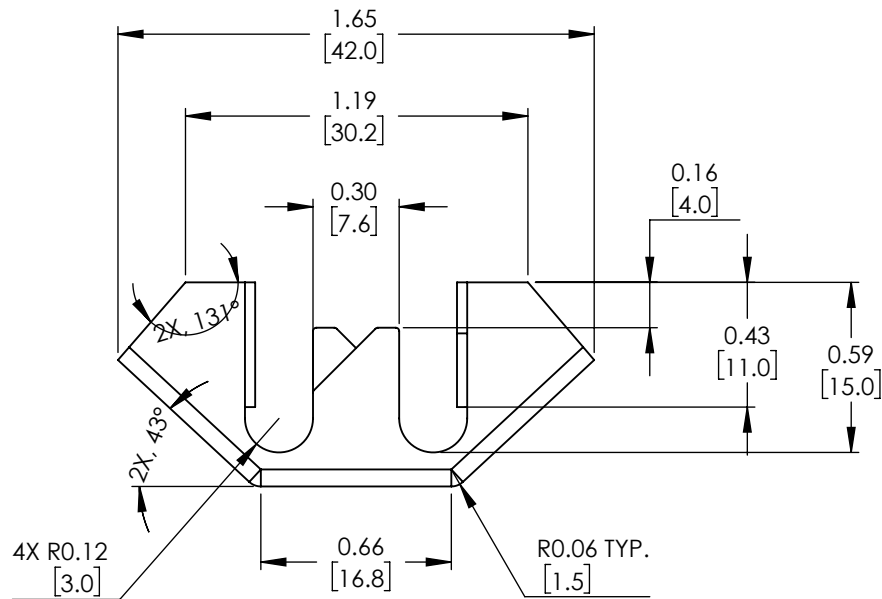
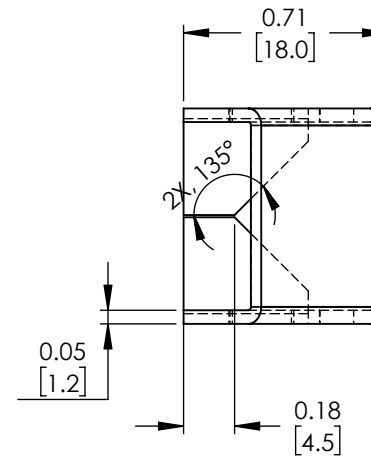
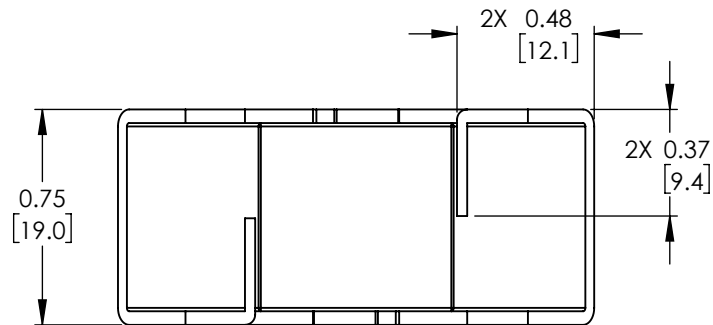


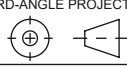
REVISIONS			
REV.	DESCRIPTION	DATE	APPROVED
A	NEW RELEASE	07/01/2021	07/01/2021



THESE COMMODITIES, TECHNOLOGY OR SOFTWARE WERE EXPORTED FROM THE UNITED STATES IN ACCORDANCE WITH THE EXPORT ADMINISTRATION REGULATIONS. DIVERSION CONTRARY TO U.S. LAW PROHIBITED.

UNLESS OTHERWISE SPECIFIED LEADING DIMENSIONS ARE INCHES DIMENSIONS IN [] ARE MILLIMETERS	
TOLERANCES:	
X = ± 2 [5.08]	FRACTIONS
.XX = ± 0.02 [0.51]	± 1/32
.XXX = ± 0.005 [0.13]	ANGLES ± 1°
CABLE LENGTH (L) TOLERANCES:	
L ≤ 12 [305] = +1 [25] / -0	
12 [305] < L ≤ 60 [1524] = +2 [51] / -0	
60 [1524] < L ≤ 120 [3048] = +4 [102] / -0	
120 [3048] < L ≤ 300 [7620] = +6 [152] / -0	
300 [7620] < L = +5%L / -0	
ALL DIMENSIONS SHOWN ARE FOR REFERENCE ONLY.	

 an INFINITI® brand	
859 E. Park Avenue, Libertyville, IL 60048 Phone: 1.800.505.1363 Website: www.navepoint.com E-mail: sales@navepoint.com	
SIZE A	CAGE CODE 7UTA6
DRAWN BY SLI	ITEM NO. 00406523

THIRD-ANGLE PROJECTION	
 THE INFORMATION AND DESIGN IN THIS DOCUMENT IS THE PROPERTY OF TRANSECTOR, INC. ALL RIGHTS RESERVED.	
SHEET 1	OF 1
SCALE N/A	
REV A	