

6

5

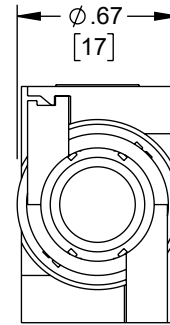
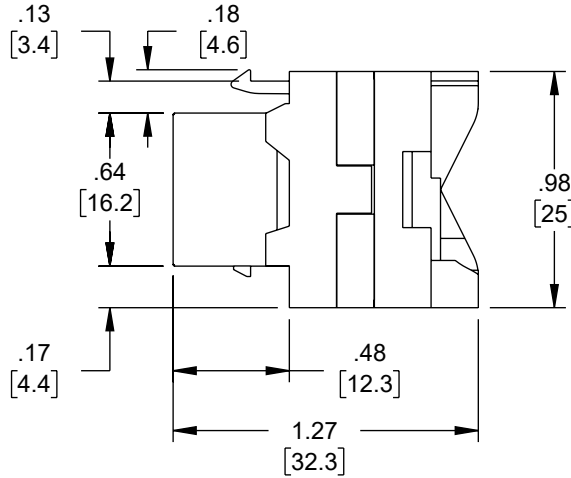
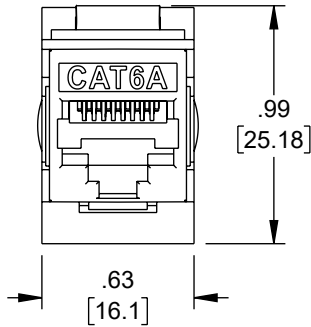
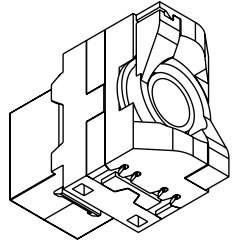
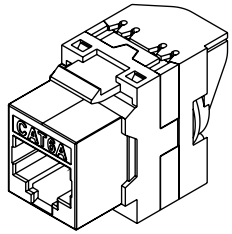
4

3

2

1

| REVISION |     |                 |            |            |            |
|----------|-----|-----------------|------------|------------|------------|
| ZONE     | REV | DESCRIPTION     | DATE       | CHANGED BY | APPROVED   |
|          | A   | INITIAL RELEASE | 04/07/2023 | DZINN      | GUTTADAURO |



NOTES:

TYPE:

- 1. CAT6A UTP 180D TOOLLESS KEYSTONE JACK.
- 2. COLOR: RED.

ELECTRICAL:

- 1. CONTACT RESISTANCE: 20m OHM.
- 2. INSULATION RESISTANCE: ≤500M OHM @100 V DC.
- 3. WITHSTAND VOLTAGE: DC1000V AC700V RMS 60Hz, I MIN.
- 4. CAT6A PERMANENT LINK: CONFORM TO ANSI/TIA/EIA 568B. 2-10.

ENVIRONMENTAL:

- 1. STORAGE: -40 / +70.
- 2. OPERATION: -10 / +60.

MECHANICAL:

- 1. PLASTIC MATERIAL: NEW PC.
- 2. GOLD PINS: PHOSPHOR BRONZE, GOLD PLATING 3 MICRONS.
- 3. TERMINAL PINS: PHOSPHOR BRONZE, TIN PLATING.
- 4. RJ45 CONTACT LIFE: 750 TIMES MIN.
- 5. IDN LIFE: 250 TIMES MIN.

ALL DIMENSIONS FOR REFERENCE ONLY.

REGULATORY COMPLIANCE:

EU RoHS DIRECTIVE (MOST RECENT RELEASED VERSION)

THE INFORMATION CONTAINED IN THIS DRAWING IS THE SOLE PROPERTY OF INFINITE ELECTRONICS, INC. ANY REPRODUCTION IN PART OR WHOLE WITHOUT THE WRITTEN PERMISSION OF INFINITE ELECTRONICS, INC. IS PROHIBITED. THESE COMMODITIES, TECHNOLOGY OR SOFTWARE WERE EXPORTED FROM THE UNITED STATES IN ACCORDANCE WITH THE EXPORT ADMINISTRATION REGULATIONS. DIVERSION CONTRARY TO U.S. LAW PROHIBITED.

UNLESS OTHERWISE SPECIFIED LEADING DIMENSIONS ARE INCHES DIMENSIONS IN [ ] ARE MILLIMETERS

TOLERANCES:

.X = ±.2 [5]      FRACTIONS ± 1/32  
 .XX = ±.02 [.5]      ANGLES ± 1°  
 .XXX = ±.005 [.13]

CABLE LENGTH TOLERANCES:

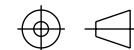
>12 [305] = +1 [25] / -0  
 >12 [305] ≤ 60 [1524] = +2 [51] / -0  
 >60 [1524] ≤ 120 [3048] = +4 [102] / -0  
 >120 [3048] ≤ 300 [7620] = +6 [152] / -0  
 >300 [7620] = +5% / -0

ALL DIMENSIONS ARE FOR REFERENCE ONLY AND SUBJECT TO CHANGE WITHOUT NOTICE.



an INFINIT® brand

Website: [www.NavePoint.com](http://www.NavePoint.com)  
 Phone: 1.800.505.1363



INTERPRET ALL DIMENSIONS AND TOLERANCES PER ASME Y14.5

SCALE

SHEET

NONE

1 OF 1

DESCRIPTION

CAT6A UTP TOOLLESS KEYSTONE JACK, 15 PACK, RED

| SIZE | CAGE CODE | DRAWN BY | ITEM NO. | REV |
|------|-----------|----------|----------|-----|
| A    | 7UTA6     | DZINN    | 00407191 | A   |

6

5

4

3

2

1