

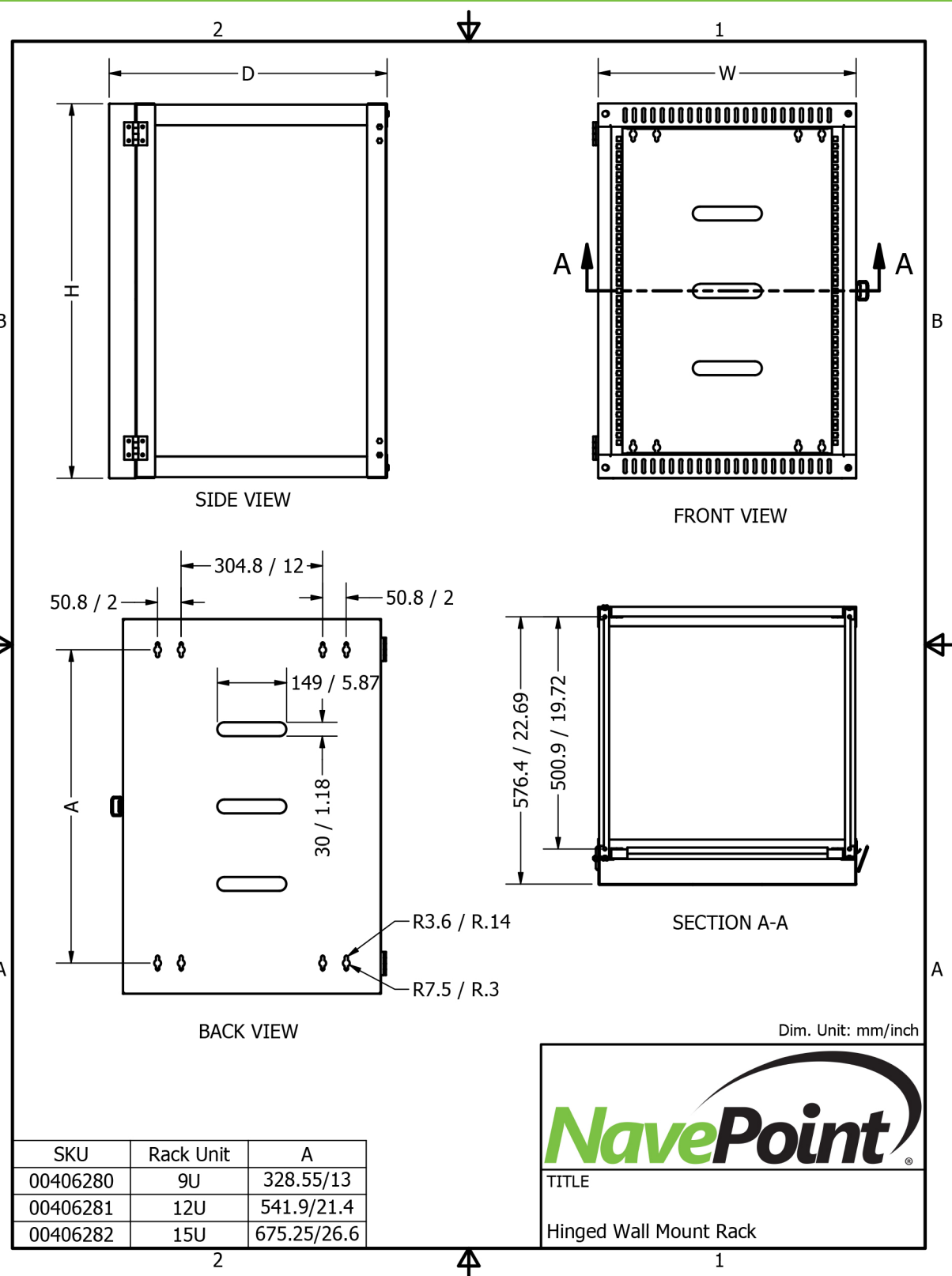
Hinged Wall-Mount Rack



The NavePoint Hinged Open Frame Wall-Mount Network Rack employs a hinged rack design with a rear swing frame that opens to provide convenient access to the back end of standard 19" servers, A/V, network and telecom equipment in offices, network closets, retailers and classrooms. The open 4-post rack design allows for maximum airflow and great overall accessibility for servicing and cable management.

Model / SKU Number		00406280	00406281	00406282
PHYSICAL				
Rack Capacity (in Rack Units)		9U	12U	15U
Maximum Rail Depth (in)		22	22	22
Unit Dimensions (in)	H	21.3	26.6	31.8
	W	21.9	21.9	21.9
	D	23.7	23.7	23.7
Weight Capacity (kg / lbs)		50 / 110		
Material		Cold Rolled Steel		
Painting / Coating		Black Powder Coating		
Construction		Bolted Assembly		
Rack Hole Type		Square Holes		
ADDITIONAL FEATURES				
Mounting		M6 Wall Anchor (4)		
Equipment Mounting Hardware		12 x M6 Cage Nut Sets	12 x M6 Cage Nut Sets	24 x M6 Cage Nut Sets
Accessibility		Hinged Gate included at back panel for rear access to equipment		
Assembly		Assembly Required		
COMPLIANCE AND CERTIFICATIONS				
EIA/ECA-310-E		✓		
ROHS		✓		
CE		✓		
DIN 41494		✓		
IEC-60297-3-100		✓		
SHIPPING				
Shipping Dimensions (in)	L	22.45	27.17	32.49
	W	21.66	22.45	22.45
	H	7.29	7.29	7.29
Shipping Weight (lbs)		30.8	37.4	44

Hinged Wall-Mount Rack



Hinged Wall-Mount Rack

